

ASIASAT

Hosting Services

Reliable, Secure
and Cost Effective



The facility is located at AsiaSat's teleport, a world-class infrastructure in Hong Kong. It is immediately available to provide hosting and colocation services that can accommodate over 200 racks.

Location

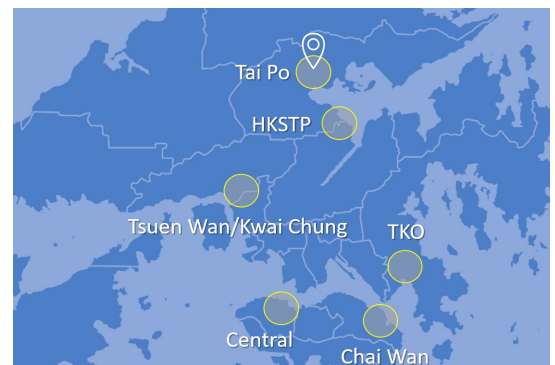
15 Dai Kwai Street, Tai Po Industrial Estate, New Territories, Hong Kong

Public Transport

Mass Transit Railway (MTR), taxi, bus and minibus

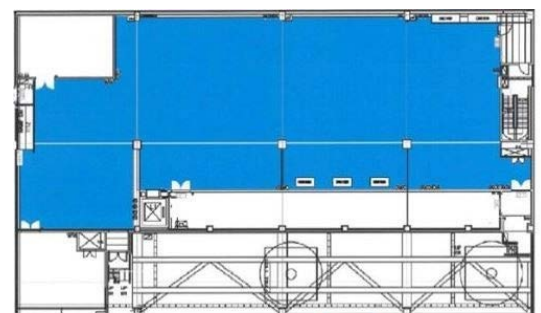
Driving Distance from Selected Locations in Hong Kong

- | | |
|--|-----------------|
| Central CBD | 30 Km (28 mins) |
| Chai Wan | 33 Km (33 mins) |
| TKO Industrial Estate | 30 Km (28 mins) |
| Tsuen Wan/Kwai Chung | 25 Km (24 mins) |
| HK Science and Technology Park (HKSTP) | 8 Km (11 mins) |



Facility Overview

- | | |
|---------------|---|
| Area | 800 sq.m. |
| Service Type | Racks/Cage/Private Suite, Remote hands support |
| Expandability | Over 25,000 sq.m. floor area for future expansion |
| Lift Lobby | 50 sq.m. with independent entrance |

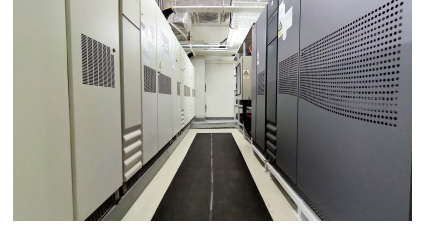
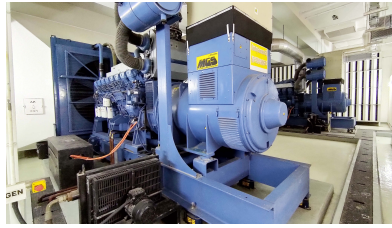


 Hosting Area



ASIASAT

Hosting Services



Specifications

Connectivity

- Telco & ISP neutral
- Major telco fibre ring presence
- Satellite uplink, downlink and turnaround services in C, Ku and Ka bands

Dual Diesel Generator Support

- Fully redundant diesel generator
- Underground fuel tank

Dual UPS Sources

- Static Transfer Switch (STS)

MVAC

- N+1 CRAC configuration
- Environmental friendly R-410A refrigerant for all cooling systems

Fire Protection System

- FM 200 fire suppression system
- Smoke & heat detectors

Water Leakage Detection System

- Under raised floor
- No chilled-water pipe in the data hall and facility areas

24 hour Access Control

- Secure smart card reader at all entrances
- Multiple zones and programmable access groups

Building Security

- Surrounded by 2.3m wall fence with over 8m wide set back area
- High resolution CCTV recording and motion detection in multiple zones, support up to 1,080p
- 24x7 security guard service

Lift System

- Traction Type
- Reliable and well-maintained by certified vendor

Raised Floor

- Maximum of 1.2m above concrete floor
- 4m below ceiling

Certification

- ISO/IEC 27001:2013 Information Security Management System



Other Facilities

- Guest parking
- Meeting rooms
- Pantry and guest lounge
- Loading and unloading bay
- Shower room



For more information, please email dc-hosting@asiasat.com

AsiaSat Proprietary, Dec 2020