

# ASIASAT

## Hosting Services

Reliable, Secure  
and Cost Effective



The facility is located at AsiaSat's teleport, a world-class infrastructure in Hong Kong. It is immediately available to provide hosting and colocation services that can accommodate over 200 racks.

### Location

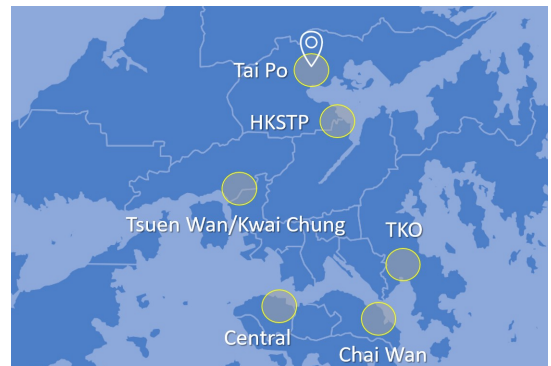
15 Dai Kwai Street, Tai Po Industrial Estate, New Territories, Hong Kong

### Public Transport

Mass Transit Railway (MTR), taxi, bus and minibus

### Driving Distance from Selected Locations in Hong Kong

- |  |                 |
|--|-----------------|
| Central CBD                            | 30 Km (28 mins) |
| Chai Wan                               | 33 Km (33 mins) |
| TKO Industrial Estate                  | 30 Km (28 mins) |
| Tsuen Wan/Kwai Chung                   | 25 Km (24 mins) |
| HK Science and Technology Park (HKSTP) | 8 Km (11 mins)  |



## Facility Overview

### Area

800 sq.m.

### Service Type

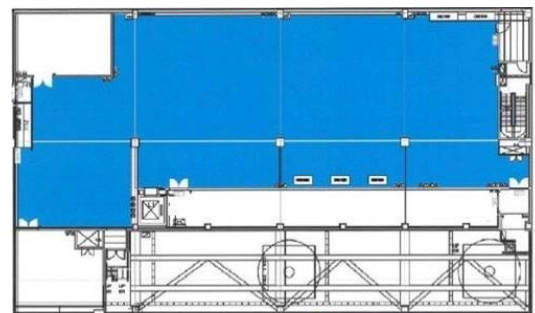
Racks/Cage/Private Suite, Remote  
hands support

### Expandability

Over 25,000 sq.m. floor area for  
future expansion

### Lift Lobby

50 sq.m. with independent entrance



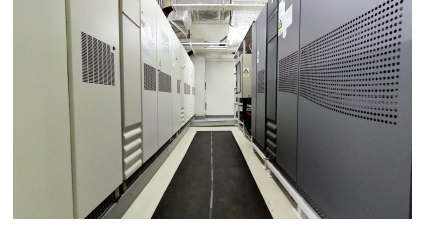
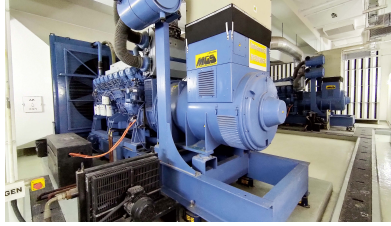
 Hosting Area



# ASIASAT

---

## Hosting Services



## Specifications

### Connectivity

- Telco & ISP neutral
- Major telco fibre ring presence
- Satellite uplink, downlink and turnaround services in C, Ku and Ka bands

### Dual Diesel Generator Support

- Fully redundant diesel generator
- Underground fuel tank

### Dual UPS Sources

- Static Transfer Switch (STS)

### MVAC

- N+1 CRAC configuration
- Environmental friendly R-410A refrigerant for all cooling systems

### Fire Protection System

- FM 200 fire suppression system
- Smoke & heat detectors

### Water Leakage Detection System

- Under raised floor
- No chilled-water pipe in the data hall and facility areas

### 24 hour Access Control

- Secure smart card reader at all entrances
- Multiple zones and programmable access groups

### Building Security

- Surrounded by 2.3m wall fence with over 8m wide set back area
- High resolution CCTV recording and motion detection in multiple zones, support up to 1,080p
- 24x7 security guard service

### Lift System

- Traction Type
- Reliable and well-maintained by certified vendor

### Raised Floor

- Maximum of 1.2m above concrete floor
- 4m below ceiling

### Certification

- ISO/IEC 27001: 2013 Information Security Management System

### Other Facilities

- Guest parking
- Meeting rooms
- Pantry and guest lounge
- Loading and unloading bay
- Shower room



For more information, please email [dc-hosting@asiasat.com](mailto:dc-hosting@asiasat.com)

AsiaSat Proprietary, Nov 2020